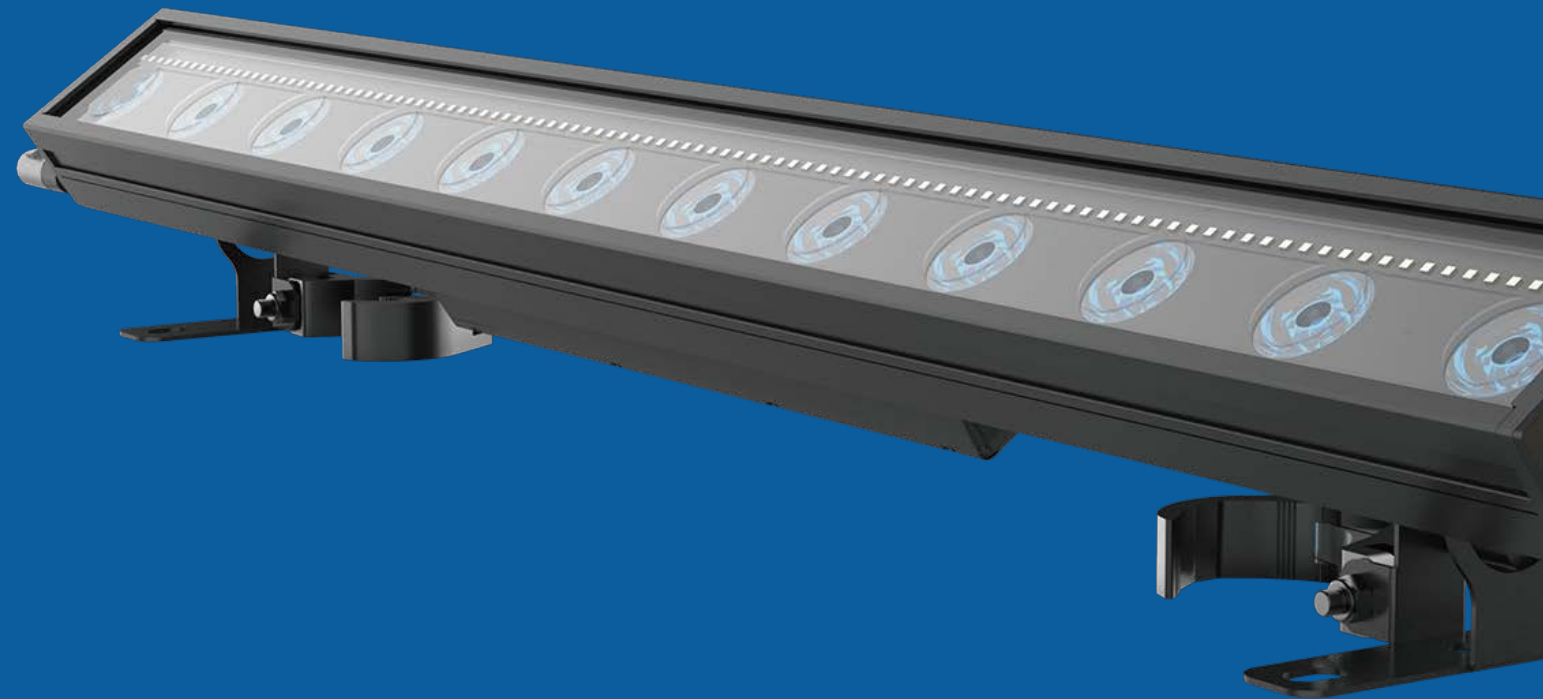


FLANDINA 22 IP

BAR 22 IP



Light Source

Beam: **12 x 10W RGBWA LED**

Strobe: **108 x 3W CW LED**

Beam Angle(50%)

30° (RGBWA)

116° (CW)

Field Angle(10%)

56° (RGBWA)

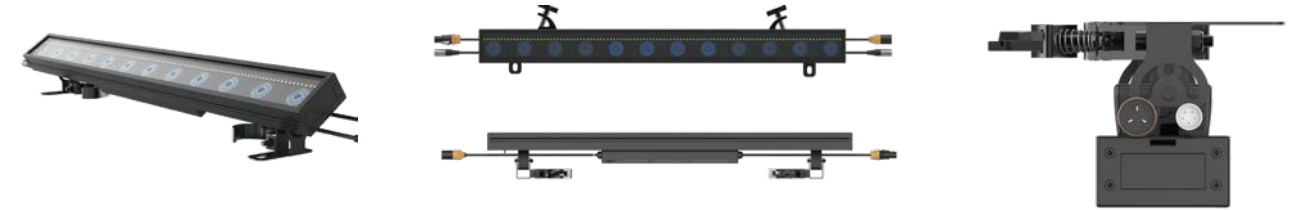
160° (CW)

Protection Rating

IP66

Acme

FLANDINA 22 IP



Main Features

12 pcs LED pixel control

Light Source:

Beam: 12 x 10W RGBWA LED

Strobe: 108 x 3W CW LED

Outstanding strobe effect with variable speed

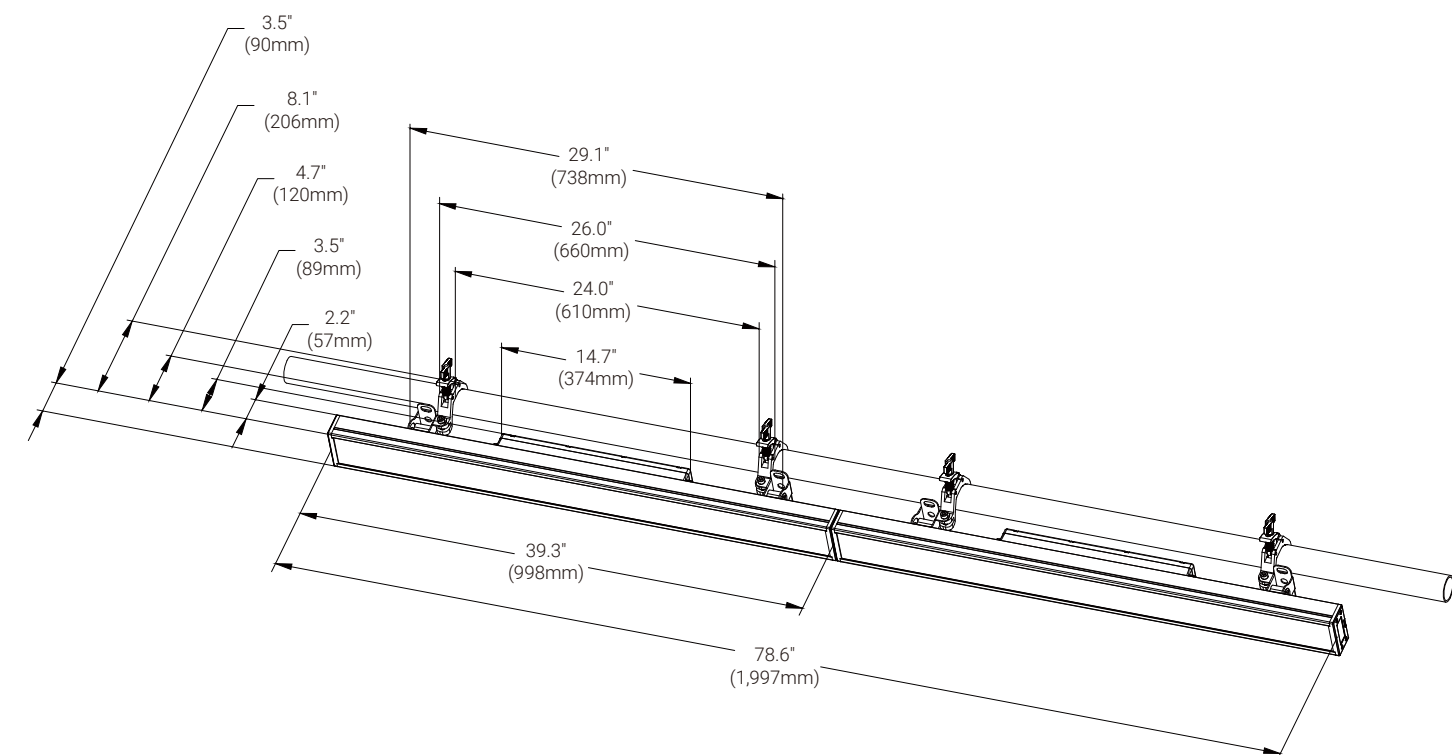
Smooth dimming 0-100%

Dual mounting bracket design, the adjustable angle reaches 180° in both directions. Integrated fold down clamps for fast and easy installation.

Flicker free management

IP66 rated

Technical Specifications



Light Sources

- Light Sources:
 - Beam: 12 x 10W RGBWA LED
 - Strobe: 108 x 3W CW LED
 - Life Expectancy: 50,000 hours * manufacturer specification

Optical System

- Beam Angle (50%):
 - RGBWA: 30°
 - CW: 116°
- Field Angle(10%):
 - RGBWA: 56°
 - CW: 160°

Other Effects

- Outstanding strobe effect with variable speed
- 0-100% smooth dimming

Control

- 4 touch button control panel
- Display: OLED display
- Control Mode: DMX512, RDM
- DMX Protocol Modes: 7
- Control Channels: 74/72/14/10/8/7/6
- Firmware Upgrade: Upgrade via DMX link

Electrical and Connectors

- Power supply with electronic auto-ranging
- Input Voltage Range: 100-240Vac; 50/60Hz
- Power Consumption: 365W
- Power In/Out: Waterproof power Connector in/out
- Data In/Out: 3-pin or 5-pin Waterproof XLR (TRUE1 type)

Physical Information

- Fixture Dimensions:
 - 998 x 92 x 185 mm (39.3" x 3.6" x 7.3")
 - Weight: 6.8 kg (15.0 lbs)

Packing Information

- Carton Dimensions:
 - 1,095 x 255 x 190 mm (43.1" x 10.0" x 7.5")
 - Weight: 8.2 kg (18.1 lbs) (one-pack loader carton)

Work Environment

- Maximum Ambient Temperature: 40°C
- Minimum Operating Temperature: -20°C
- Maximum Surface Temperature: 65°C
- Protection Rating: IP66

Installation

- Horizontally or vertically mounting
- 2 fixed foldable clamps for 50mm truss
- Universal working position

Photometric (Images)

Beam Angle:

