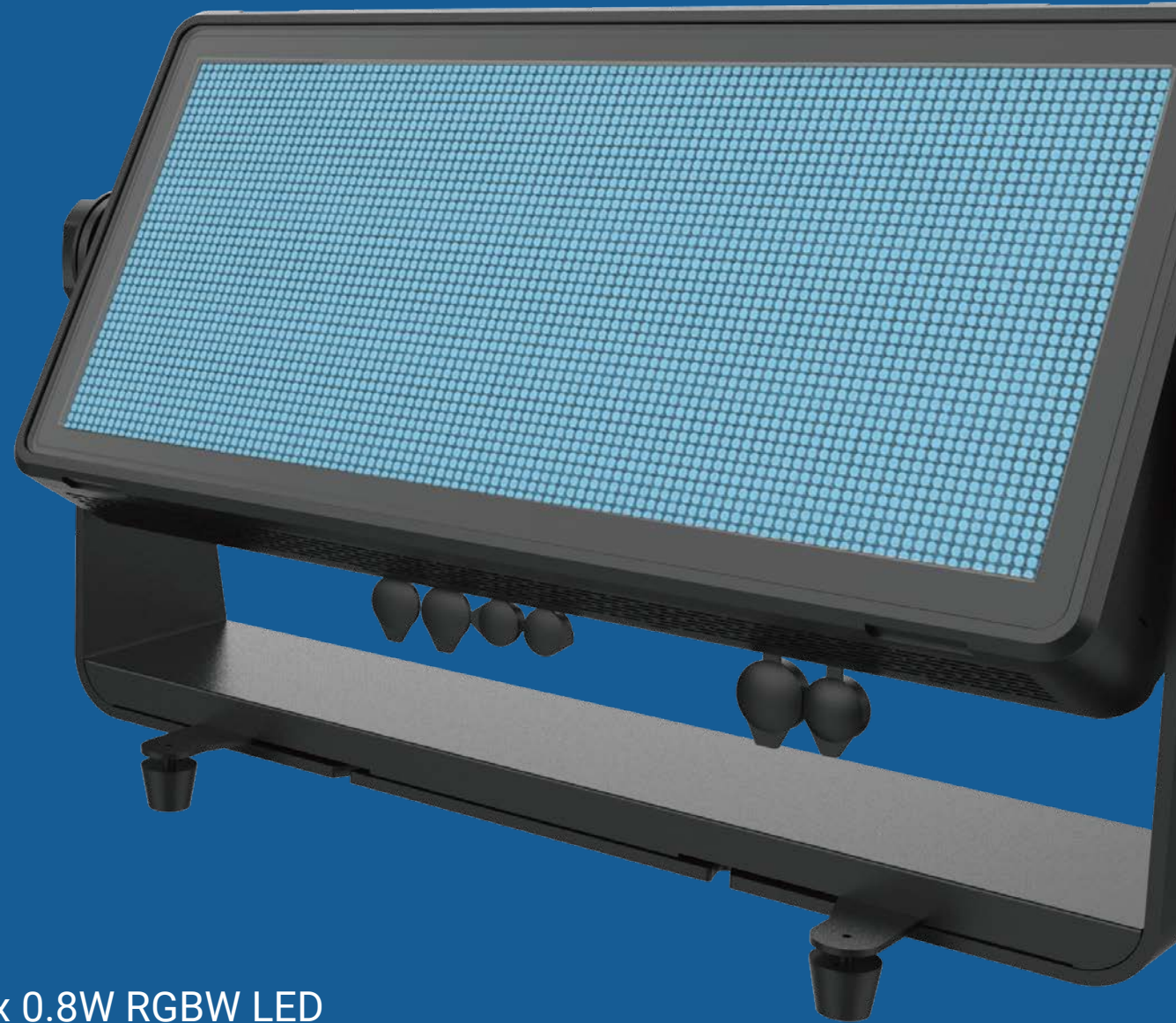


THUNDERSTRUCK

LP-2304



Light Source
2,304 x 0.8W RGBW LED

Total Lumen Output of Fixture
70,000 lumens

Beam Angle
110°

Field Angle
152°

Acme

THUNDERSTRUCK



Main Features

Light Source: 2,304 x 0.8W RGBW LED

Total Lumen Output of Fixture: 70,000 lumens

Beam Angle: 110°

Field Angle: 152°

RGBW color mixing

12 individually controllable LED zones

High brightness, outstanding washing effects

Outstanding strobe effect with variable speed

Smooth dimming 0-100%

IP65 rated

Flicker-free operation

Quantity of Connections:

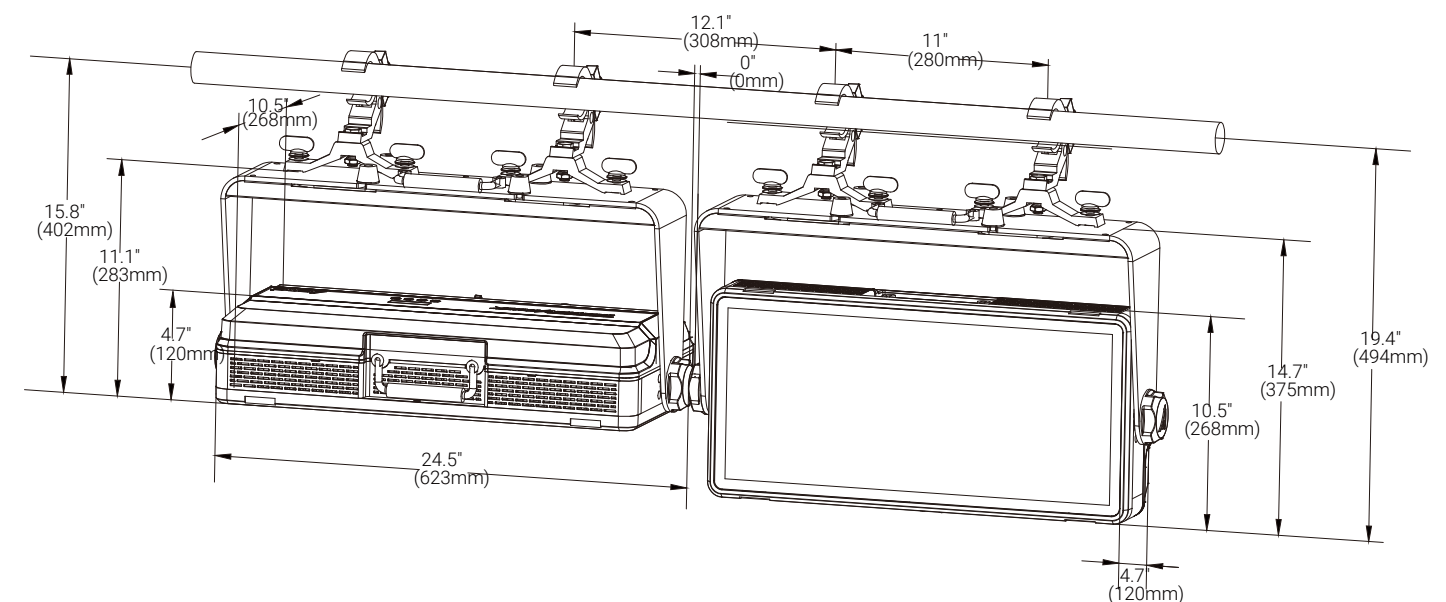
Maximum Quantity of DMX Connections: 32 sets

Maximum Quantity of Power Supply Connections:

120V, 60Hz: 1 set

230V, 50Hz: 2 sets

Technical Specifications



Light Source

- Light Aource: 2,304 x 0.8W RGBW LED
- Total Lumen Output of Fixture: 70,000 lumens
- Life Expectancy: 20,000 hours* manufacturer specification

Optical System

- Beam Angle: 110°
- Field Angle: 152°

Other Effects

- RGBW color mixing
- 12 individually controllable LED zones
- High brightness, outstanding washing effects
- Powerful strobe effects
- Smooth, high-resolution dimmer 0–100%

Control

- 4 touch button control panel
- Display: OLED display
- Protocols: DMX-512, RDM, Art-Net, sACN
- DMX Protocol modes: 13
- Control channels:
 - 4/8 (16-bit)/8/9/52 channels
 - 1/2V/ 2H/3/4/6V/6H/12 pixels
- Firmware Upgrade: Upgrade via DMX link

Electrical and Connectors

- Auto-ranging power supply
- Input Voltage Range: 100–240Vac; 50/60Hz
- Power Consumption: 1,500W
- Power In/Out: Waterproof power connectors (TRUE1 type)
- Data In/Out: 3-pin or 5-pin XLR, RJ45

Physical Information

- Fixture Dimensions:
 - 387 x 123 x 623 mm (15.2" x 4.8" x 24.5")
 - Weight: 16.0 kg (35.2 lbs)

Packing Information

- Flight Case Dimensions:
 - 1,220 x 815 x 630 mm (48.0" x 32.1" x 24.8")
 - Weight: 170.9 kg (376.8 lbs) (six-pack loader case)

Work Environment

- Maximum Ambient Temperature: 40°C
- Minimum Operating Temperature: -10°C
- Maximum Surface Temperature: 65°C
- Protection Rating: IP65

Installation

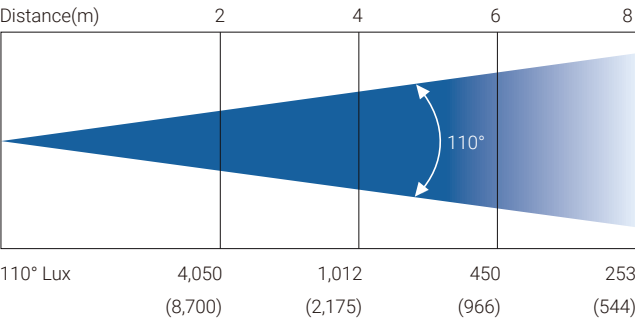
- Retractable floor feet
- 2 pairs fast-lock points under base
- Safety cable hole

Optional barn-door



Photometric (Images)

(The value with bracket are illuminance data during strobe.)



Specifications subject to change without notice.